



KANE-TCAM

Thermal Imaging Camera

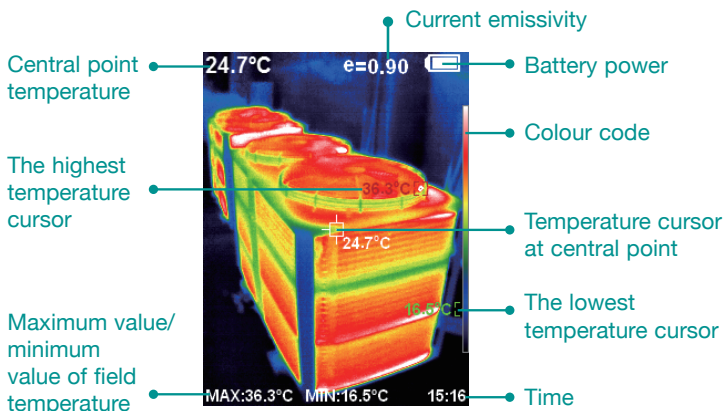
Combines surface temperature measurement & real-time thermal imaging

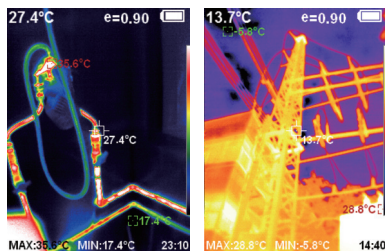
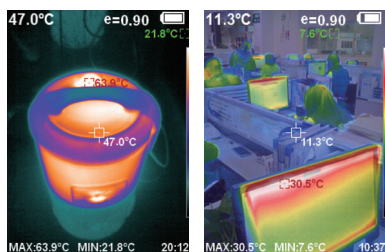
Key Features:

- The large colour display & on-screen cursor
 - Accurately locate temperature hotspots
- 3GB SD Card Data storage
 - Store up to 20,000 images that can be extracted through USB
- Rechargeable battery
 - 2-3 hours use in normal operation
- Four types of surface measurement modes:
 - Coarse surface
 - Semi-matte surface
 - Semi-shiny surface
 - Shiny surface
- Ideal for many industries including:
 - Plumbing & Heating
 - Radiators, underfloor heating, energy auditing or water damage
 - Automotive
 - Heated seats & windows, high resistance in wiring, overheating wiring or components



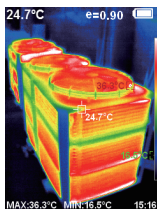
Display Screen 2.8 inch full view TFT display



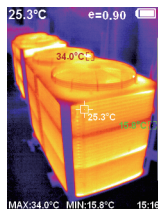


Colour palette:

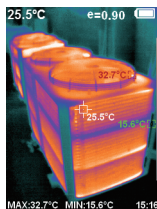
- For additional contrast between high & low temperatures



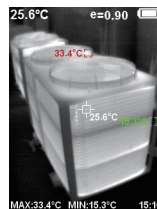
Rainbow



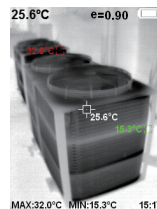
Iron oxide red



Cold colour



White heat



Black heat

Specifications

| | |
|-------------------------------|--------------------------------|
| Model | KANE-TCAM |
| Display screen | 2.8-inch full-view TFT display |
| Temperature measurement range | -20°C to 300°C (-4°F to 572°F) |
| Measurement accuracy | ±2°C/±2% |
| Infrared image resolution | 220×160 |
| Visible image resolution | 35200 pixel |
| LCD resolution | 320×240 |
| Field angle | 35°×26° |
| Shortest focus length | 0.15M |
| Thermal sensitivity | 0.07°C |
| Frame rate of thermal images | 9Hz |
| Focus mode | Fixed |
| Wavelength coverage | 8-14um |
| Emissivity | Adjustable from 0.01 to 1.00 |



Customer Service

0800 059 0800

Outside UK Call **+44 1707 375550**

Email: sales@kane.co.uk

Northern Customer Service

Kane International Ltd

Gibfield Park Avenue, Atherton,
Manchester, M46 0SY, UK
Email: nservice@kane.co.uk

Southern & International Customer Service

Kane International Ltd

Kane House, 11 Bessemer Road,
Welwyn Garden City, Hertfordshire, AL7 1GF, UK
Email: sservice@kane.co.uk

Distributed by:



uw distributeur | servicepartner

Antennestraat 26 +31 (0)36 535 06 51
1322 AB Almere info@mw-instruments.nl
Nederland www.mw-instruments.nl

onderdeel van
www.whitman.nl



KANE and the KANE logo (registered in the UK and elsewhere) are trademarks of Kane Group Limited, used under licence.
All other marks are trademarks of their respective holders. © 2021 Kane International Limited

www.kane.co.uk

Follow us on...

